

## Illustrator Setup and Basic operation Training:

Open Illustrator → File → New

(See Figure 1 Below)

Change Name to the Model that you are using Example VLS 4.60

Change the Page Size to the machine (Example 24" x 18")

Color Mode: to RGB

Orientation: to Landscape

Raster Effects: to 300 DPI

Units: whatever you would like

Select "OK"

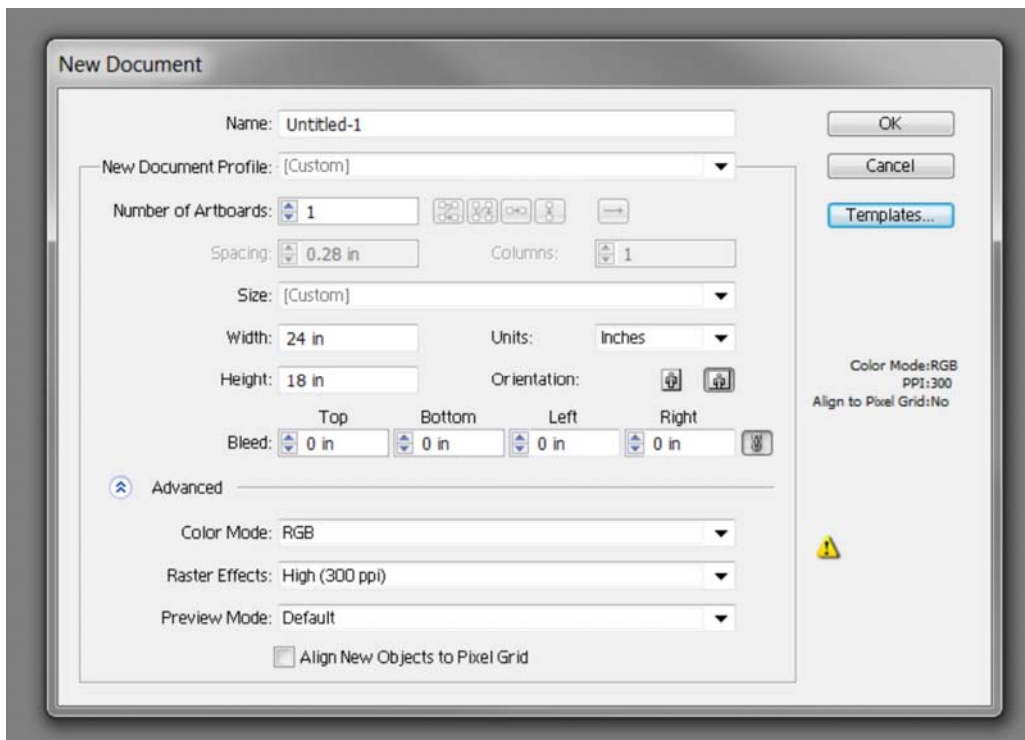


Figure 1

Select the Drop down menu:

View → Rulers → Show Rulers (or select "Ctrl + R")

To change the ruler origin, move the pointer to the upper-left corner where the rulers intersect, and drag the pointer to where you want the new ruler origin.

As you drag, a cross hair in the window and in the rulers indicates the changing Global ruler origin

Select the Color Selection in the upper left section of the page (Figure 2)

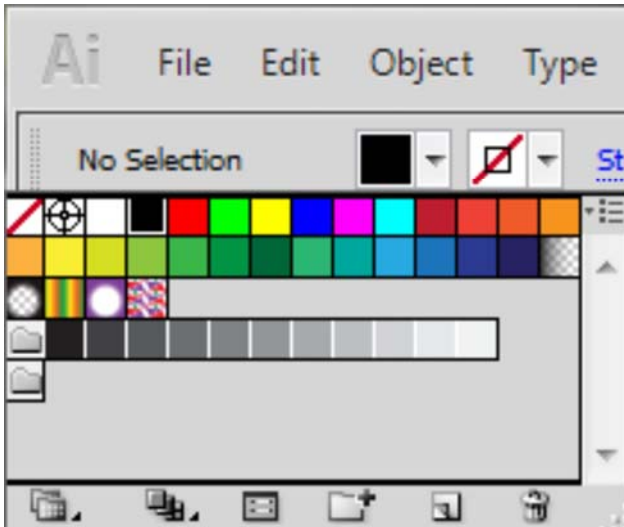


Figure 2

Double Click each Color to create the Laser Color pallet (Figure 3)

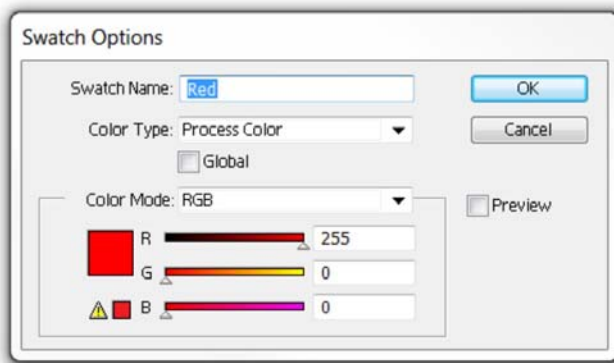


Figure 3

Rename and adjust the colors to the Chart below

COLOR	RED	GREEN	BLUE
BLACK	0	0	0
RED	255	0	0
GREEN	0	255	0
YELLOW	255	255	0
BLUE	0	0	255

MAGENTA	255	0	255
CYAN	0	255	255
ORANGE	255	102	0

*To remove excess colors select the color that you do not want and drag them to the small trash can at the bottom of the color window, **DO not remove other colors if you use them for other reasons.***

Finished Color Pallet for Universal Laser systems should look like Figure 4

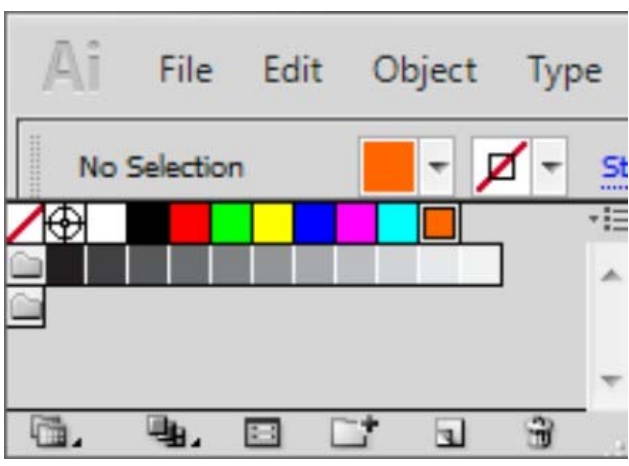


Figure 4

Select the Drop down menu:

Edit → Color Settings (or select “Shift + Ctrl +K”)

Select the Settings drop down menu → Emulate Adobe Illustrator 6.0 (Figure 5)

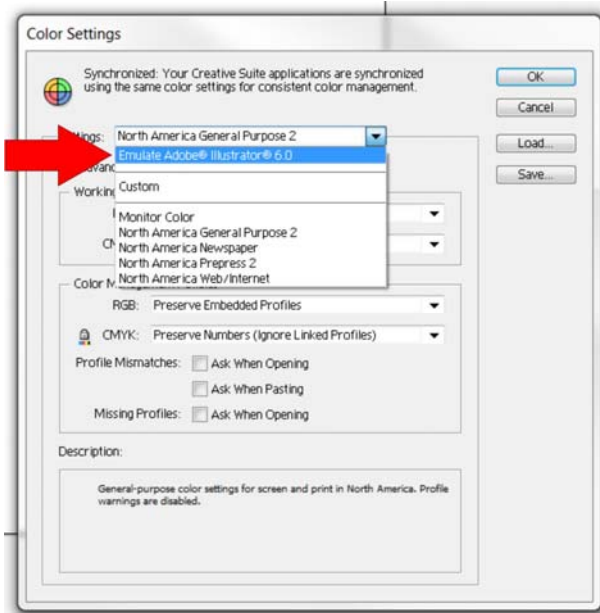
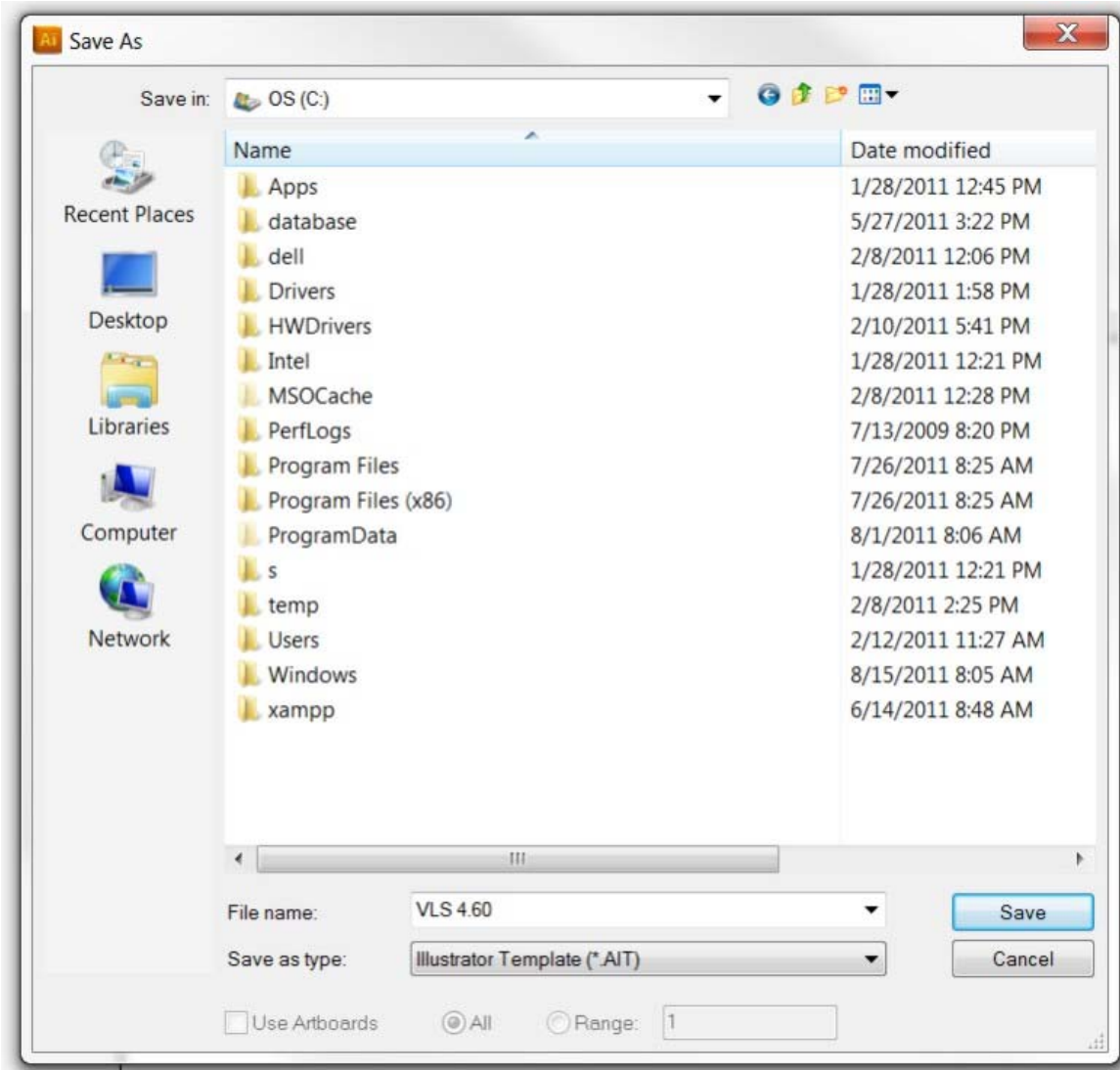


Figure 5

You are now finished with the Setup, now you need to save this as a Template so that you do not have to do this process again, to do this go to:

**File → Save as Template...**



Save your Template to a location that you can find latter and when you want to use that template again select: File → New from Template...

### When running a converted 1-Touch Laser Photo image in Adobe Illustrator

File → Place

Then select and place the image on to your Page and **Embed** the image

**Select the Embedded 1-Touch Image then select:**

Edit → Edit Colors → Convert to Grayscale  
*This has to be done otherwise the laser will not see or engrave the image from Illustrator*

## Basic operational tools to maneuver through Illustrator

### Main Toolbar

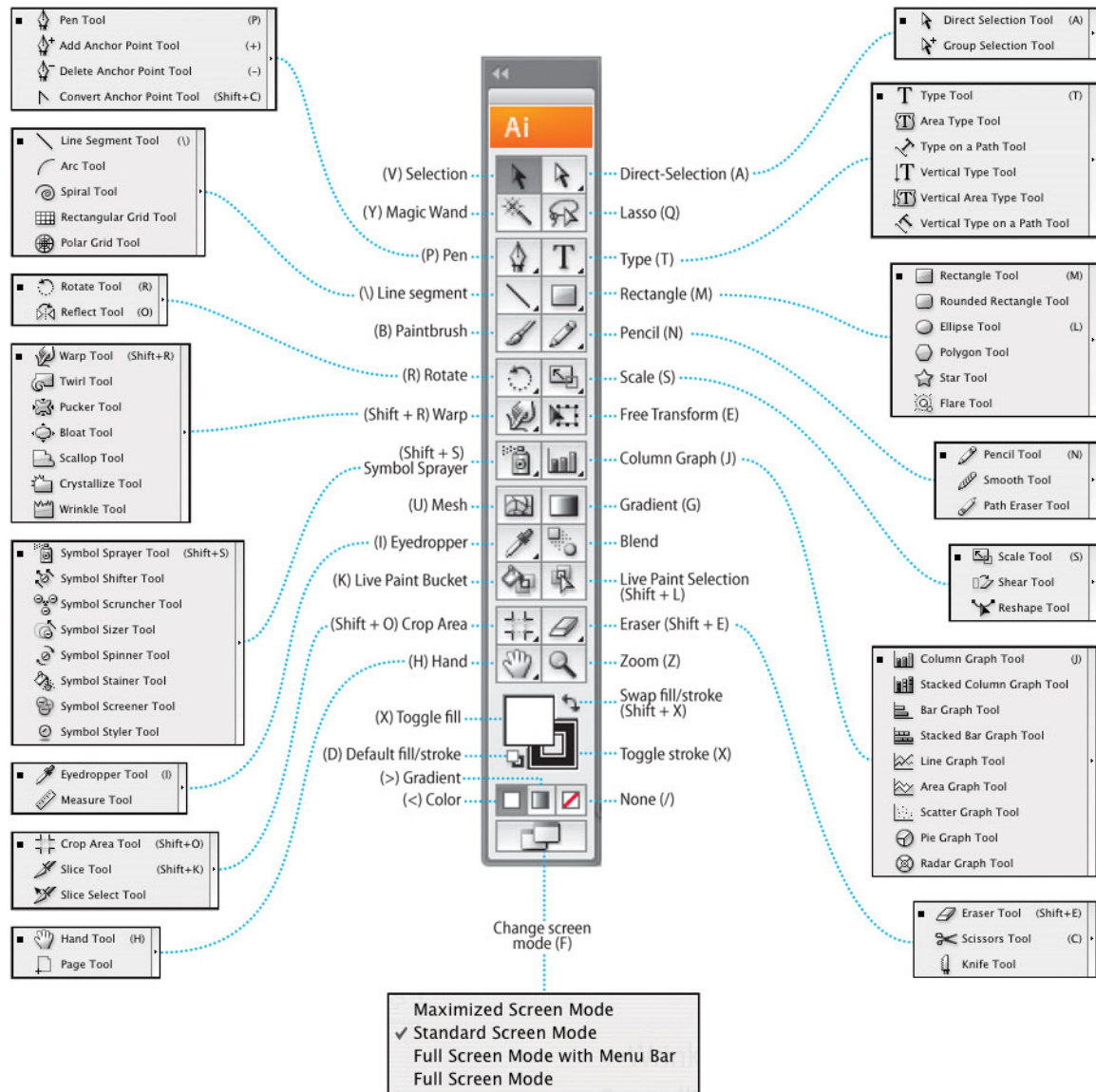


Figure 6

## Tools Needed for Basic operational skills

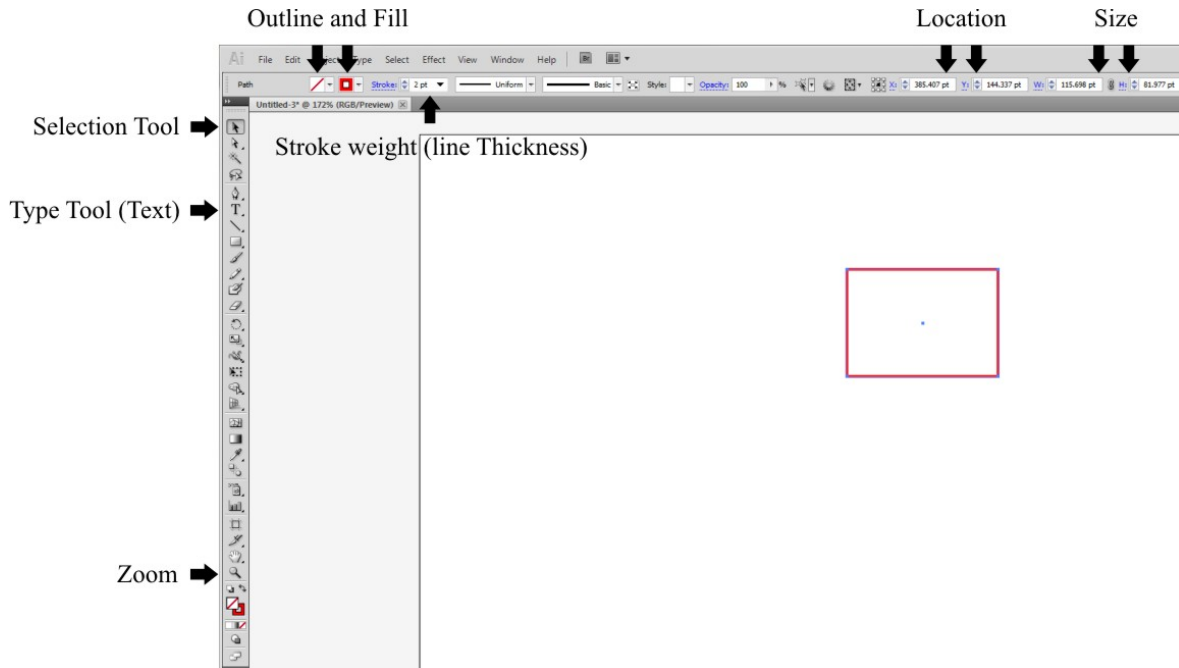


Figure 7

## Selection Tool

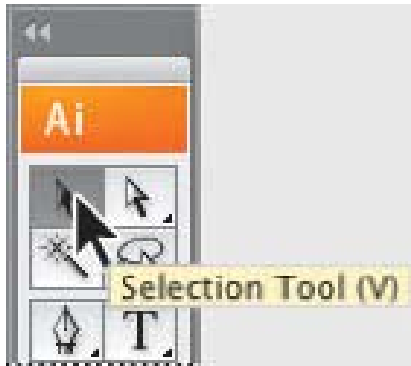


Figure 8

The Selection Tool (Shown in Figure 8) is for selecting, moving and adjusting an image in your drawing.

## Fill and Outline

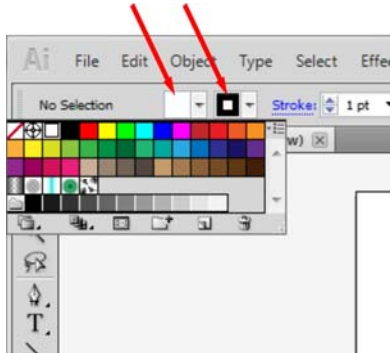


Figure 9

Fill is on the left and outline is on the right (Shown in Figure 9), this is what would be used for filling and outlining a vector based image.

To remove a fill or an outline, select the white box with the diagonal red line through it will remove the fill or the outline.



## Stroke weight (line Thickness)

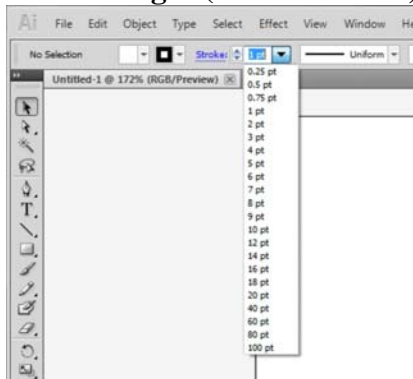
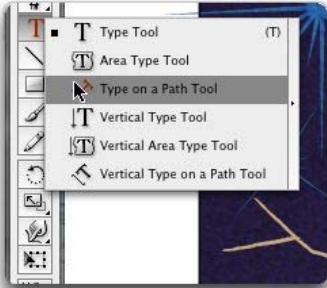


Figure 10

When you have an outline and need to change the line thickness called Stroke weight in Illustrator, select the dropdown menu (Shown in Figure 10). The Laser will require a stroke weight to be 0.001pt in order for the laser to see the line as a vector or a cut, this number can be typed in manually to adjust.



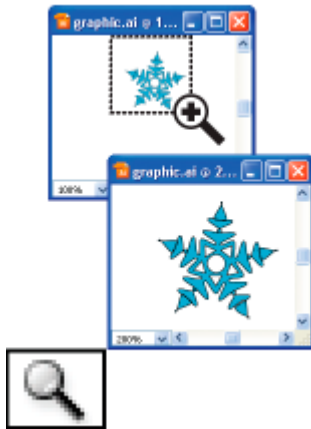
## Type Tool (Text)



*Figure 11*

Type tool is used for adding text to your drawing (Shown in Figure 11).

## Zoom Tool



*Figure 12*

The Zoom Tool is for selecting and zooming into an object, (Shown in Figure 12) to zoom back to the full page just double click on the zoom tool or by selecting the zoom percentage on the bottom left of the screen when the zoom tool is selected.

## Hand Tool (Hold Space Bar)



Used for relocating the screen to another location.

## Placing items (Importing)

File → Place

This is used for bringing in a JPEG or EPS into your existing drawing.