

CorelDRAW X5 & CorelDRAW X6

CorelDRAW X5 & CorelDRAW X6 work best with Windows 7 but can be used with Windows Vista & Windows XP.

Step One:

Make sure that you have installed all Service Releases and software patches from Microsoft for the version of Windows that you are using. You can get service packs & Windows patches from the Microsoft Update website: <http://www.update.microsoft.com>

Universal Laser Systems is not responsible for any problems that may result from usage of these patches.

Step Two:

Install the printer driver for your laser engraver. If you have any trouble getting the driver loaded, please contact ULS technical support at 480-609-0297 or email support@ulsinc.com

Install CorelDRAW on your computer and check for updates. Once CorelDRAW is loaded, you can check for updates by clicking on **Help > Updates** and let the software search for updates. Alternately, you can go the Corel website to check for updates: <http://www.corel.com> Universal Laser Systems is not responsible for any problems that may result from usage of these patches.

Step Three:

Install the MDColorPalette Color Palette. If you don't have the MDColorPalette.cpl file, please contact ULS technical support at 480-609-0297 or email support@ulsinc.com Once you have the color palette, it will need to be placed in the **My Palettes** folder under **My Documents** on your computer.

Open CorelDRAW and start a new graphic.

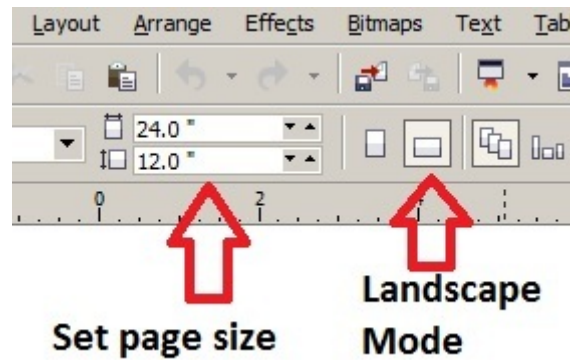
Next, click **Window > Color Palettes > None** The default CMYK color palette on the right side of the CorelDRAW screen will disappear.

Next, click **Window > Color Palettes > Open Palettes** and window open that displays the available custom color palettes for CorelDRAW. Double-Click the **MDColorPalette** file and the window disappears. When the window closes, you will now see the MDColorPalette displayed on the right side of the CorelDRAW screen:



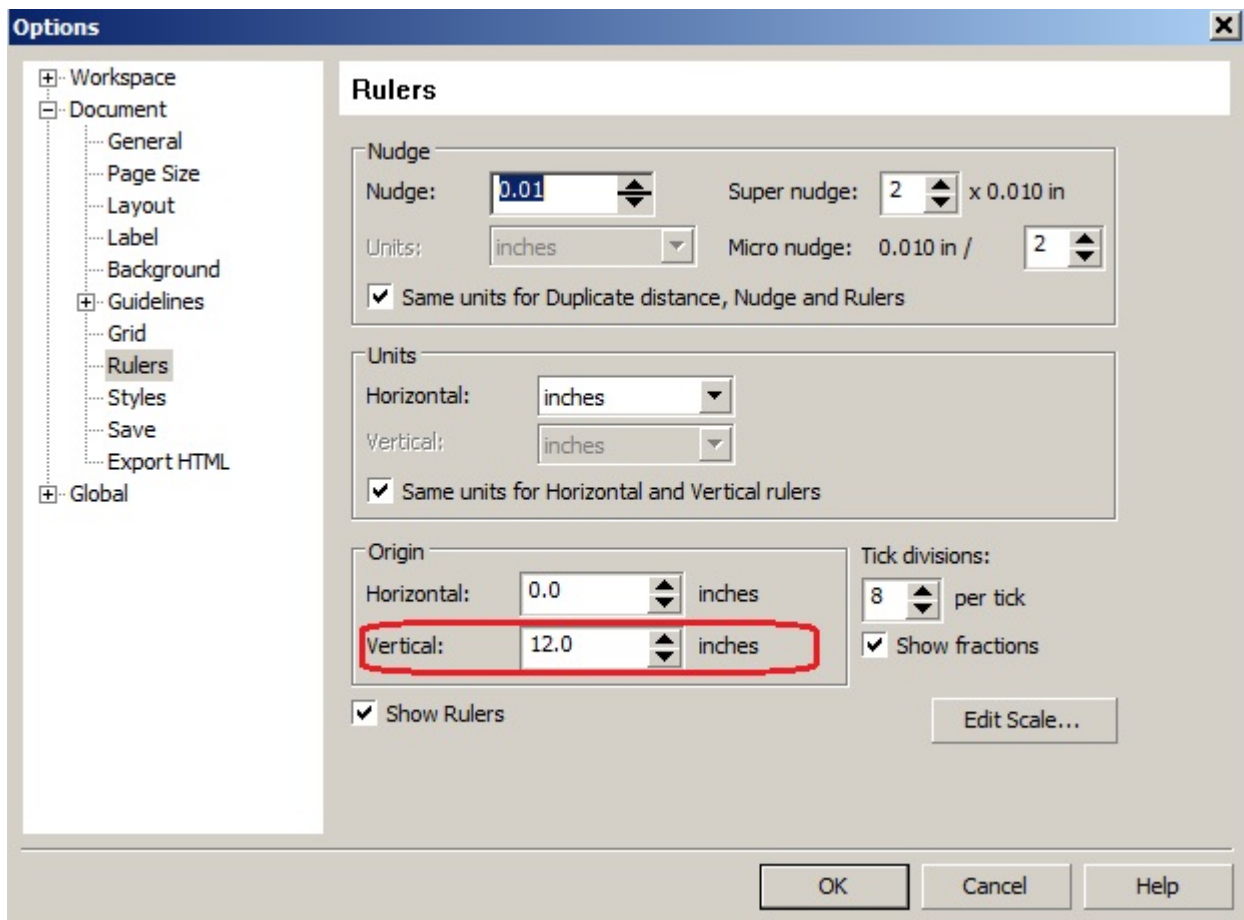
Step Four:

Next setup the page size. Click on the Landscape button and then set the X & Y sizes to the same size as your engraving table on your laser engraver:



Be sure to set the **Units** to the desired setting (ie, Inches, Millimeters, etc)

Universal Laser System engravers have the X=0 & Y=0 position as the upper left corner (instead of the lower left corner like a true Cartesian coordinate). By default, the Y=0 value on CorelDRAW will be in the lower left corner. **Double-Click** on the left ruler and a window appears. Set the **Vertical** setting to the Y size of your virtual sheet of paper and click OK. (ie, if the Y=12, enter a 12.0; if the Y=18, enter a 18.)



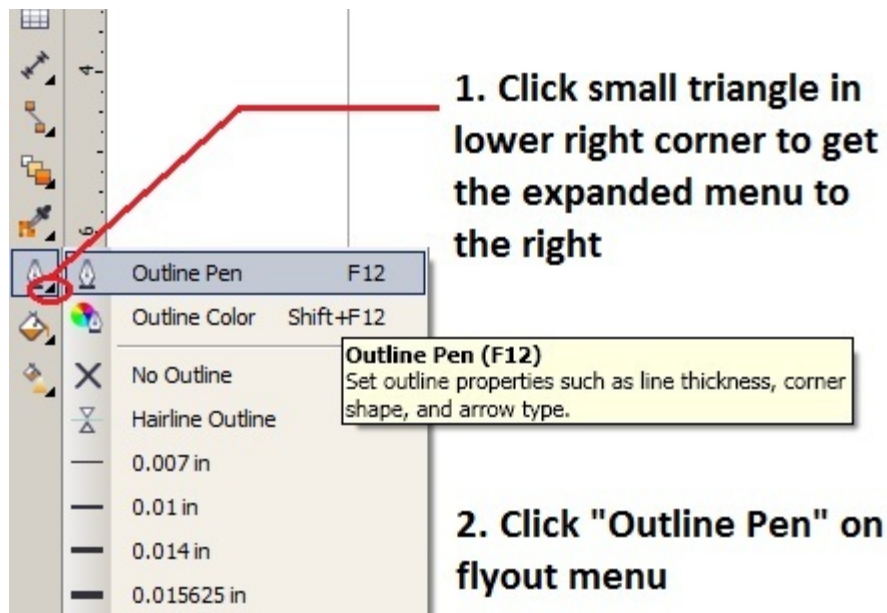
Click OK to close the window. When the window closes, the Y=0 should now be in the top left corner.

Step Five:

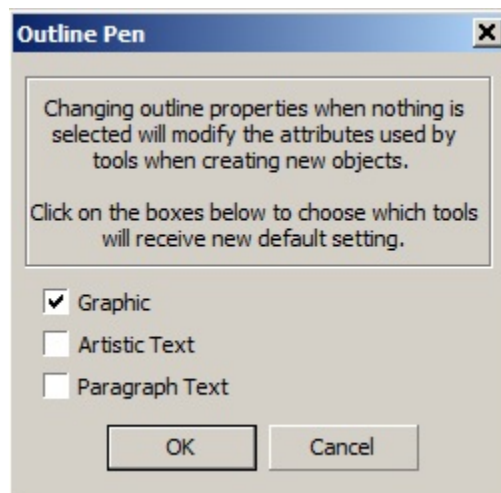
Double-Click the left ruler once more to make the Option window appear again. On the left hand side of the window is a tree; **click** on the **+** by **Global** to expand the list. Next, **click** on the **+** by **Printing**, then click on the **Driver Compatibility**. A dropdown list will appear on the top right. Click on this and select the ULS engraver from the list of installed printer drivers. Make sure that **All of the check boxes are UNCHECKED**. Click **OK** to close the window.

Step Six:

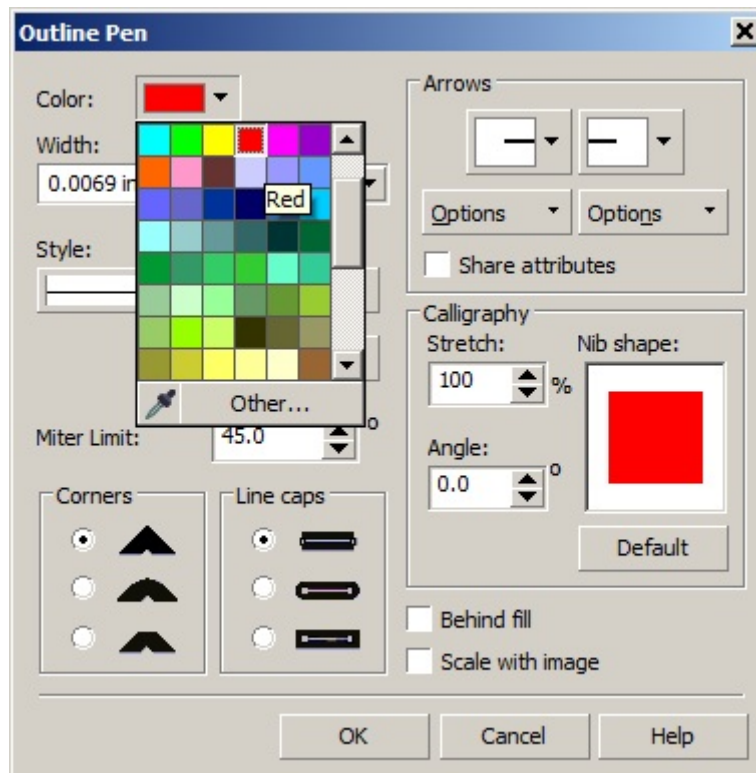
Click the **small triangle** in the lower left corner of the **Outline Pen** icon. A flyout menu appears to the right. **Click** on the **Outline Pen** choice at the top of the flyout menu:



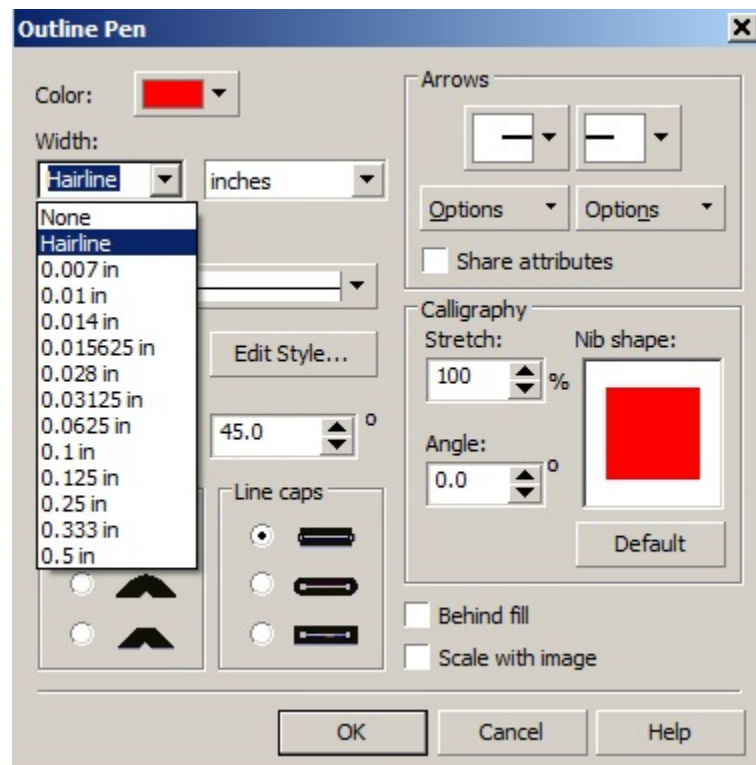
Next, a small window appears. Make sure this window only has **Graphic CHECKED** and then click **OK**. The window shown below is for Corel X5; Corel X6 will have some extra check boxes, just make sure that only the **Graphic** checkbox is Checked.



Next, a window appears. Click the **Color** dropdown and a palette selection opens. Select **RED** from the available choices and the palette selection will collapse back to the original window.



Next, **click** on the **Width** dropdown and select **Hairline**. CoreDRAW is now setup to do red lines as hairlines. (hairline line weight is required for all vector lines). **Click OK** to close this window.



Step Seven:

Turn off color management. **Click Tools > Color Management > Default Settings**

A window appears, click the **Presets** dropdown and select **Simulate Color Management Off** from the available choices.

Click OK to close the window.

Step Eight:

Save default settings. **Click Tools > Save Settings As Default.** Any new CorelDRAW document that is now created will have all of the settings optimized for usage with Universal Laser Systems engravers.